



Lockyer Valley Regional Council  
26 Railway Street, PO Box 82, Gatton Qld 4343  
All official correspondence to be addressed to the CEO  
Telephone 1300 005 872 | Facsimile (07) 5462 3269  
Email mailbox@lvrc.qld.gov.au | www.lockyervalley.qld.gov.au

Application ID: OW2024/0032  
Enquiries: Tammy Thomas  
Contact: 5462 0687

23 August 2024

Park Lake Adare Pty Ltd TTE Park Lake Adare Unit Trust  
C/- Peter Eustance & Associates  
PO Box 2835  
NERANG QLD 4211

Dear Abraham

**Electricity Reticulation Design located at 63 Redbank Creek Road Adare and described as Lot 900 on SP328401**

Thank you for your correspondence dated 21 June 2024 enclosing your proposed electrical reticulation design for the above development. The drawings submitted are detailed in Table 1 below.

Project Number	Drawing Number	Title	Electrical Consultant	Date
S1302264	Sheets 1-6	Install Conduits, Cables, Transformer, Streetlights, Pillars	PE Consulting Engineers	21 June 2024

**Table 1 – Plans Subject to this Notification**

Council acknowledges receipt of your drawing/s referenced in Table 1, and advises that there are no objections to the reticulation design.

This correspondence has been issued on the basis that the information on the drawings you supplied are compliant with the associated development approval. The Registered Professional Engineer Queensland (RPEQ) certifying the drawings must ensure that the Public Lighting is designed in accordance with the Australian Standard AS1158 *Lighting for roads and public spaces* series.

Please be aware that unless approved in writing, the Lockyer Valley Regional Council requires the electricity reticulation to be located in the electricity service corridor detailed on the Institute of Public Works Engineering Australasia standard drawing RS-100 *Public Utilities Typical Service Corridors and Alignments*.

It is the responsibility of design engineer for electrical reticulation design to check civil works design drawings to ensure that there are no conflicts with proposed works. Council will accept no responsibility for any errors or omissions made on your behalf.



Note that approval to undertake works within the road reserve is to be obtained from Council prior to works commencing, by lodging an [Application to Undertake Works on a Road](mailto:mailbox@lvrc.qld.gov.au) to [mailbox@lvrc.qld.gov.au](mailto:mailbox@lvrc.qld.gov.au).

Upon completion of the works, a copy of the Energex Certificate of Supply must be submitted to Council.

Should you require any additional information please contact Council's Technical Planning Officer, Tammy Thomas on 5462 0687.

Yours faithfully

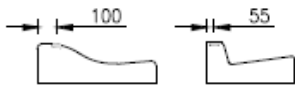
Michael Dargusch  
**COORDINATOR DEVELOPMENT ASSESSMENT**

Encl     IPWEQ Standard Drawing for Electrical Reticulation  
           Approved Plans

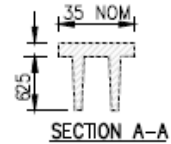


Service Corridors	
Location from R.P. Boundary	
Electricity, Gas & Telecommunications	0 - 900
Water/Sewerage	901 - 2100
Telecommunications	2101 - 3000
Location from back of kerb	
Lighting Columns/Trees	0 - 1000
Gds/SW Drainage	

Locate marker discs directly over service conduits



LOCATION OF MARKERS



SERVICE MARKERS

- W ... Water service
- WM ... Water main
- E ... Electrical service
- T ... Telecommunication service
- I ... Irrigation service
- G ... Gas
- S ... Sewerage main

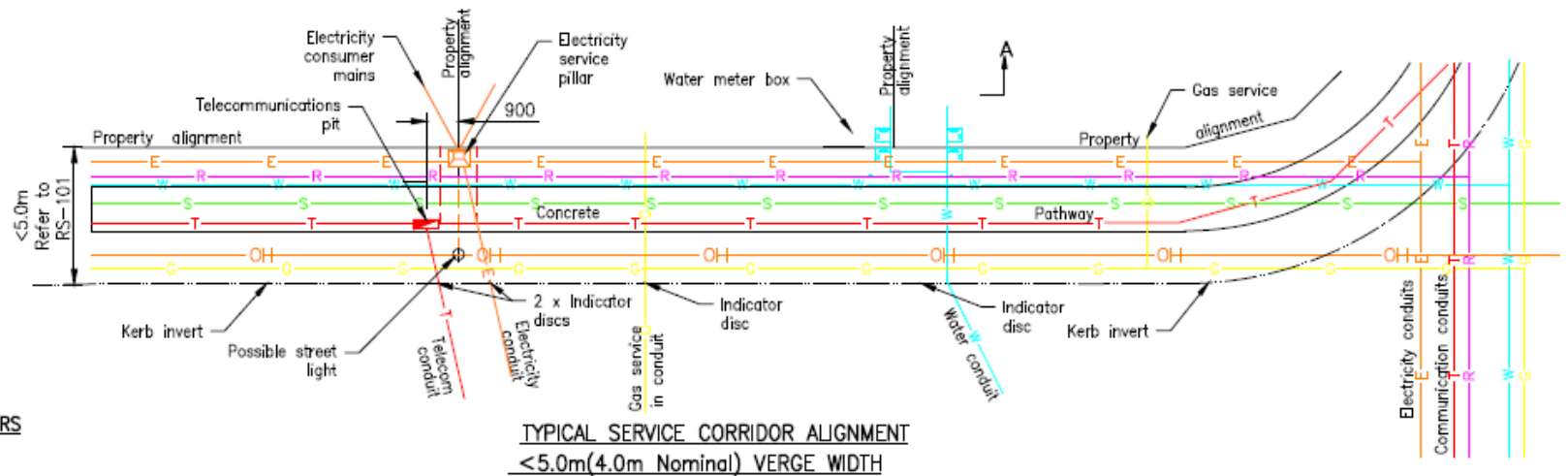


TYPICAL BRASS SERVICE MARKER DISCS

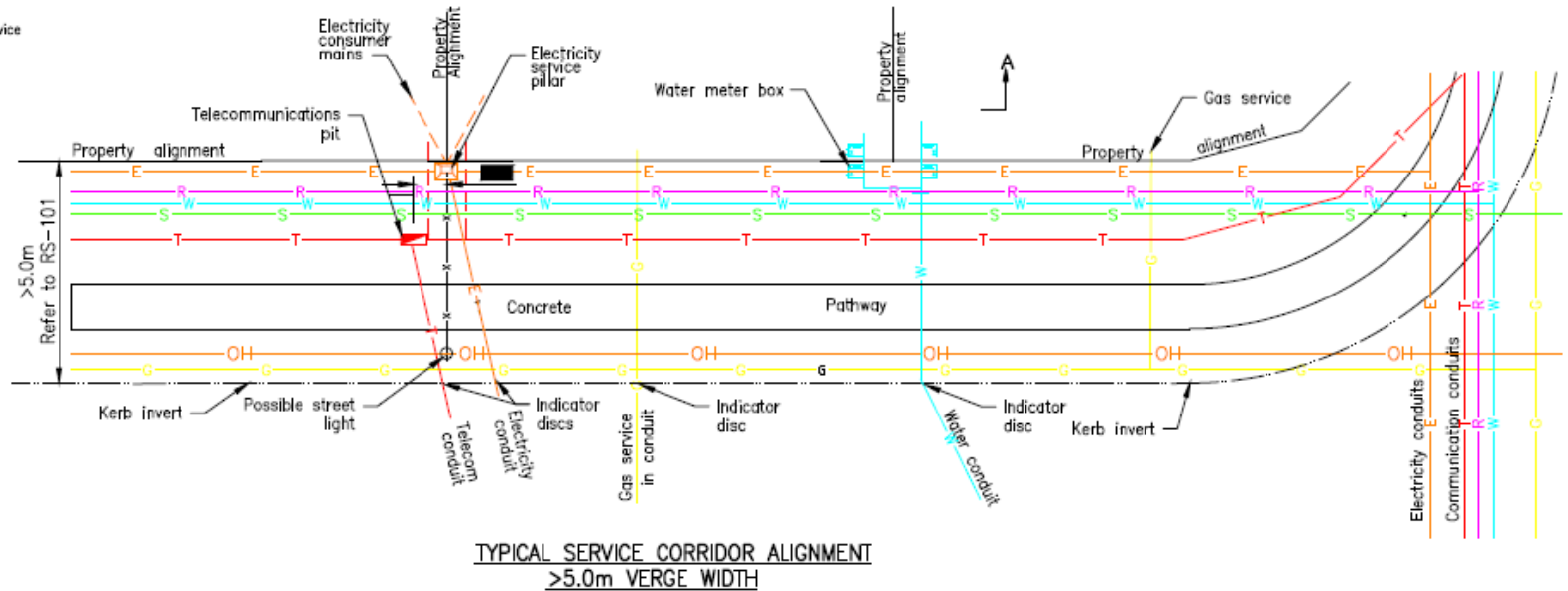
Service Corridors	
Location from R.P. Boundary	
Electricity, Gas & Telecommunications	0 - 1000
Water/Sewerage	1001 - 3000
Telecommunications	3001 - 4000
Trees	
Gas/SW Drainage	4001 - 5000

LEGEND

Road Crossing Conduits Shown by Dashed Lines	
Gas	G Yellow
Water	W Blue(light)
Recycled Water	R Lilac
Sewer	S Green
Telecommunications	T Red
Electricity	E Orange
Electricity Overhead	OH Orange



TYPICAL SERVICE CORRIDOR ALIGNMENT  
<5.0m(4.0m Nominal) VERGE WIDTH



TYPICAL SERVICE CORRIDOR ALIGNMENT  
>5.0m VERGE WIDTH

These drawings have been developed in consultation between the participating Councils.  
BEFORE USE, the user shall confirm that the drawing has been adopted by the appropriate Council.

Rev	DATE	ORIGINAL ISSUE	REVISIONS
F	05/17	Review	
E	06/16	Review	
D	05/14	Review	
C	03/14	Amended Drawing Number	
B	06/09	Review	
A	03/08	ORIGINAL ISSUE	



INSTITUTE OF PUBLIC WORKS ENGINEERING AUSTRALASIA  
STANDARD DRAWINGS

PUBLIC UTILITIES  
TYPICAL SERVICE CORRIDORS AND ALIGNMENTS

RS-100